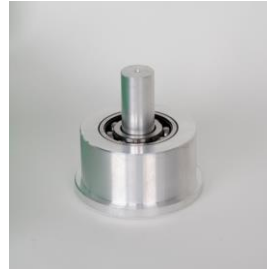




# product data sheet

name: Bearing fitting tool kit, light out on field model  
 art. no.: 71-L  
 ean: 4021176782121  
 series: 71-L



## technical data

| attribute                      | value                    |
|--------------------------------|--------------------------|
| inner diameter of ball bearing | 10 - 50 mm               |
| inner diameter of ball bearing | 25/64 - 1 31/32 inch     |
| outer diameter of ball bearing | 26 - 110 mm              |
| outer diameter of ball bearing | 1 1/32 - 4 13/32 inch    |
| number of impact sleeves       | 3 St. / pcs.             |
| diameter of impact sleeves     | 19, 32, 50 mm            |
| diameter of impact sleeves     | 3/4, 1 1/4, 1 31/32 inch |
| length of impact sleeve        | 220 mm                   |
| length of impact sleeve        | 8 21/32 inch             |
| number of rings                | 33 St. / pcs.            |
| weight                         | 6.34 kg                  |

## Ersatzteile

| name                           | product number |
|--------------------------------|----------------|
| Impact sleeve -A-              | 71-L-SH-A      |
| Impact sleeve -B-              | 71-L-SH-B      |
| Impact sleeve -C-              | 71-L-SH-C      |
| Plastic impact ring 10 - 26 mm | 71-L-SR-1      |
| Plastic impact ring 10 - 30 mm | 71-L-SR-2      |
| Plastic impact ring 10 - 35 mm | 71-L-SR-3      |
| Plastic impact ring 12 - 28 mm | 71-L-SR-4      |
| Plastic impact ring 12 - 32 mm | 71-L-SR-5      |
| Plastic impact ring 12 - 37 mm | 71-L-SR-6      |

|                                 |            |
|---------------------------------|------------|
| Plastic impact ring 15 - 32 mm  | 71-L-SR-7  |
| Plastic impact ring 15 - 35 mm  | 71-L-SR-8  |
| Plastic impact ring 15 - 42 mm  | 71-L-SR-9  |
| Plastic impact ring 17 - 35 mm  | 71-L-SR-10 |
| Plastic impact ring 17 - 40 mm  | 71-L-SR-11 |
| Plastic impact ring 17 - 42 mm  | 71-L-SR-12 |
| Plastic impact ring 20 - 42 mm  | 71-L-SR-13 |
| Plastic impact ring 20 - 47 mm  | 71-L-SR-14 |
| Plastic impact ring 20 - 52 mm  | 71-L-SR-15 |
| Plastic impact ring 25 - 47 mm  | 71-L-SR-16 |
| Plastic impact ring 25 - 52 mm  | 71-L-SR-17 |
| Plastic impact ring 25 - 62 mm  | 71-L-SR-18 |
| Plastic impact ring 30 - 55 mm  | 71-L-SR-19 |
| Plastic impact ring 30 - 62 mm  | 71-L-SR-20 |
| Plastic impact ring 30 - 72 mm  | 71-L-SR-21 |
| Plastic impact ring 35 - 62 mm  | 71-L-SR-22 |
| Plastic impact ring 35 - 72 mm  | 71-L-SR-23 |
| Plastic impact ring 35 - 80 mm  | 71-L-SR-24 |
| Plastic impact ring 40 - 68 mm  | 71-L-SR-25 |
| Plastic impact ring 40 - 80 mm  | 71-L-SR-26 |
| Plastic impact ring 40 - 90 mm  | 71-L-SR-27 |
| Plastic impact ring 45 - 75 mm  | 71-L-SR-28 |
| Plastic impact ring 45 - 85 mm  | 71-L-SR-29 |
| Plastic impact ring 45 - 100 mm | 71-L-SR-30 |
| Plastic impact ring 50 - 80 mm  | 71-L-SR-31 |
| Plastic impact ring 50 - 90 mm  | 71-L-SR-32 |
| Plastic impact ring 50 - 110 mm | 71-L-SR-33 |
| Nonrebounding hammers           | 343-050    |